

August, 2020

## The Valley Buzz

### MANAGER'S MESSAGE:



As of August 21<sup>st</sup>, the District has detected one mosquito sample positive for West Nile virus.

For the state of California, as of August 14<sup>th</sup>, there have been 882 West Nile virus (WNV) positive mosquito samples from 25 counties. In 2020, there have been 207 St. Louis Encephalitis (SLE) positive mosquito samples from 7 counties.

While the virus activity is significantly reduced this year, the activity and spread of invasive *Aedes* mosquitoes continues to rise. These mosquitoes are aggressive day-time biting, back yard breeders. If you are experiencing bites in the lower leg and ankle area, please contact the District. We can help!

For weekly status updates, connect with the District on Facebook or Twitter, or go to [www.wvmvcd.org](http://www.wvmvcd.org).

*Dr. Michelle Brown*

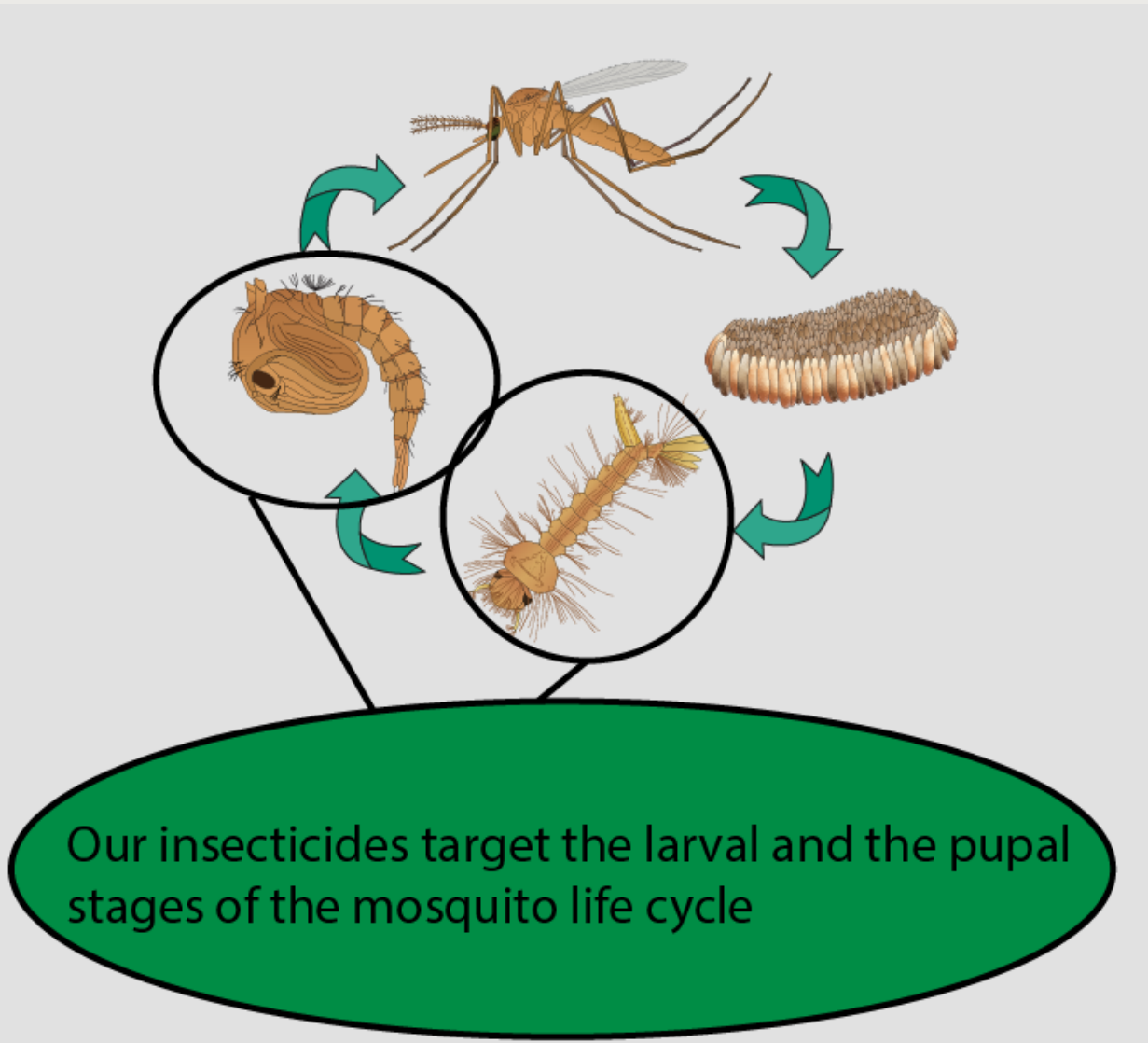
### TECHNICIAN'S TIPS:

Breaking the cycle – How our larvicides work.

Integrated Pest Management focuses on education, exclusion, and targeted control

measures to maximize efficiency while having the least effect on the environment. The insecticides we use in today's vector control have a lot of science and testing behind them in order to be efficient and targeted.

We use insecticides that target both larvae (who eat and/or absorb the insecticide) and pupae (who absorb the insecticide, because pupae don't eat!). These insecticides attempt to disrupt the mosquitoes' life cycle and stop them while they are stuck in the water phase, before they can fly away and bite. Our technicians are highly trained and certified to use these insecticides.



## FROM OUR LABORATORY:

Why is standing water so important? The why and where of mosquito breeding.

The reason we spend so much time talking about standing water is because mosquitoes cannot reproduce without it! Actually, if you refer to the above picture, you can see that most of a mosquito's life is spent in standing water, the eggs, larvae and pupae stages all need that standing water to survive.

And it does not need to be lot of water. Mosquitoes can live and grow in something as



small as a bottle cap! By removing standing water on and around your property, you make a huge impact in a mosquito's ability to lay her eggs!



These  
sources  
could  
be in  
**YOUR**  
yard!

## OUTREACHING OUT TO YOU!

### Mosquitoes “mouthing off”

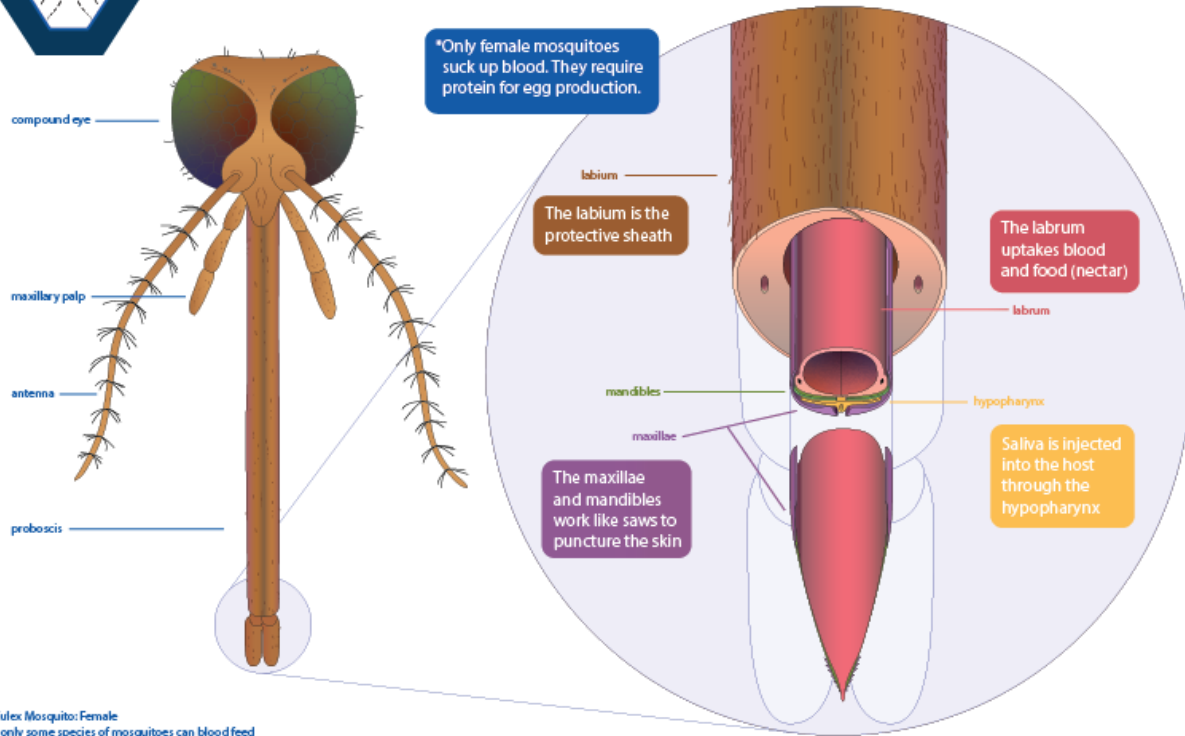
Did you know only the female mosquitoes bite? They are collecting the blood to help develop their eggs! Have you ever wondered how they get that “blood donation” from us? Most folks think of a mosquito's mouth, or proboscis, as a needle or straw, but it is much more complicated!

A mosquito's proboscis is actually constructed of six different parts. Some parts actually pierce the skin (maxilla and mandibles) while others suck up the blood and inject saliva into our bodies (hypopharynx and labrum).

The injection of saliva into our bodies is why mosquitoes are so good at transmitting diseases, those little “germs” hitch a ride in the saliva and get injected right into us! That's a good enough reason to wear mosquito repellent, right?!



# Virus Transmission: Mouthparts



Culex Mosquito: Female  
\* only some species of mosquitoes can blood feed

For Information and Assistance Contact:

909-635-0307  
www.wvmvcd.org

1295 East Locust St  
Ontario, CA 91761

@westvalleymvcd  
@WestValleyMVCD

@wvmosquito  
wvmosquito

While we face many challenges in public health, we are confident that with your continued support, cooperation, and friendship, we can continue to protect our residents in this vast and ever-changing landscape.

*Thank you for supporting us over the years!*

Contact Us  
Phone: 909-635-0307  
Email: [adminemail@wvmvcd.org](mailto:adminemail@wvmvcd.org)  
Website: [wvmvcd.org](http://wvmvcd.org)

Connect with us

